



**UONL
Prospectus
2022/23**

**Change
starts here.**

**UO
N | L**

Find out more at
london.northampton.ac.uk

Welcome.

UONL is a proud partner of the University of Northampton (UON). UONL provides a range of Undergraduate degrees, with an enhanced focus on employability whilst studying in the capital.

Working to high academic and professional standards, we are approved to deliver a wide range of UON programmes. UONL programmes are designed to ensure it aligns with the University's Strategic Plan and Changemaker social impact commitments.

Delivering programmes in our new campus in East India exhibits our commitment and correlates with the University's Strategic Ambition to be the digital leader in UK Higher Education.

Our commitment to transforming lives and inspiring change is at the heart of all that we do. We want to ensure that your experience studying with us enables you to transform your life and those of others too, no matter how great or small this may be.



Location.

The UONL campus is located in the Docklands area of East London. Our building, which opened its doors in September 2021 is in East India (6th floor, The Import Building, E14 2BE). Our site has been a part of a multi-million pound refurbishment, and it is part of a 650,000 sq. ft newly transformed contemporary site in East London.



You can find on everything you need on campus:

- State-of-the-art lecture theatres and seminar rooms
- UONL Student Union (SU) office
- IT room
- Wellbeing service
- Large breakout areas with space for you to work and socialise, furnished with sofas and chairs for a more relaxed environment
- Multiple study pods and booths, perfect for group work or personal study.
- Library housing copies of all the core textbooks, a range of relevant publications and online archives for each programme. There are also dedicated areas with computers suitable for study groups, quiet study or simply catching up on your emails
- If you need to refuel there is a wide range of supermarkets, cafes and food markets within minutes of the building
- We have dedicated areas for our students to eat and drink between classes
- Wi-Fi is available throughout the building
- PureGym located on the ground floor open 24/7.



What to Expect

The design of our programme provides the opportunity for our students to enhance their personal and teamwork skills, with the support of our academic experts. Our two days a week lectures (6 hours physical face-to-face on campus, plus 6 hours virtual face-to-face delivered via Zoom) coupled with active blended delivery, allows for greater flexibility whilst studying, but also ensures the quality of teaching and support is not compromised.

Our East India campus is equipped with technology infrastructure which can support our interactive way of teaching and learning. Such an approach ensures our students receive comparable experience without compromising the quality of education and the ability to interact with one another.

All our classrooms are equipped with audio and visual equipment to enable us to deliver active blended learning, this ensures students who are following the lectures virtually have a comparable learning experience to that in the classroom.



Connected for Convenience

Our campus is connected by national rail and can easily be reached by the London Underground (Bank, London Bridge, Waterloo and Stratford). East India DLR station is situated onsite, from platform to classroom is only a few minutes' walk, connecting you with the rest of London at ease and convenience. For more information please visit our Contact Us page.

About us.

UONL in partnership with The University of Northampton (UON) is one of the youngest universities in the UK but is already leading the way in adding value to society, which we call social impact.

In 2012, UON was the first university in the UK to be internationally recognised as a Changemaker Campus, and all UONL programmes are designed to align with the University's Strategic Plan and Changemaker Social Impact Commitments.

The design of our programmes provides the opportunity for our students to enhance their personal and teamwork skills, with the support of our academic experts. Our structured two days a week of lectures, coupled with the active blended delivery, allows our students to manage their education with their personal lives.

All Student Learning is supported by:

- UONL VLE (Virtual Learning Environment)
- e-Books (accessed through Kortext)
- The UON Digital Library
- The UONL App
- Virtual face to face learning on Zoom
- A dedicated Wellbeing, Disability & Inclusion Team
- UONL Employability Office.

Changemaker Commitment

UONL programmes are designed to align with our Changemaker commitments for personal development and social impact. Employability is embedded as part of all UONL curriculum, ensuring our students are career-ready once they graduate and obtain graduate employment. UONL students can evidence a set of key attributes from contributing to the socio-economic welfare, cultural and heritage in London, they understand and embrace social impact; working towards the betterment of our society.

“We develop our students to do the right things, in the right way, with the right people, for the right reasons.”

Changemaker values

Changemaker means that as an institution we are committed to building a practiced set of attributes.

We believe that as Changemakers we:

- Collaboration
- Self-Direction
- Change
- Work Ethic, Integrity & Values

In short, we develop our students to do the right things, in the right way, with the right people, for the right reasons.

A University Experience Tailored to You.



Changemaker

In leading the Changemaker Social Impact Commitments within London, UONL embeds Changemaker throughout our curriculum/programme offering. We provide broad support for our students to benefit from personal development and gaining experiences that help them to immerse themselves in the world around them - seamlessly connecting their studies with social impact activities.



Employability

UONL has a key focus on employability during and after the degree. We aim to give unprecedented access to a host of potential employers and careers, UONL is the perfect place to build the skills and gain the knowledge required to kick start a successful career.



Learning Structure

Our two days a week lectures (6 hours physical face-to-face on campus, plus 6 hours virtual face-to-face delivered via Zoom) coupled with active blended delivery, allows for greater flexibility whilst studying, but also ensures the quality of teaching and support is not compromised.



Scholarships

Once students have successfully finished their first year of study at UONL, top achievers may be eligible for a Scholarship of £2,000 to be taken off the following Academic Year's tuition fees.



Wellbeing, Disability & Inclusion

The UONL Wellbeing Service provides ongoing specialist support and care to our student body. The Disability & Inclusion Team offers support to students who have mental health difficulties, ongoing medical conditions and/or specific learning difficulties.



Support Whilst You Study.



Our Student Services Team is here to support you during your studies. We can help you throughout your studies at UONL.

Employability Service

We encourage and support students to equip themselves with the tools they need to manage their career while studying at UONL, because we want you to achieve your ultimate career goals!

This includes:

- Giving you advice and helping you find the right career, course, or training route to enable you to progress into rewarding graduate employment or postgraduate education.
- Helping you understand the skills, values, beliefs, ambitions, and experience you already have that will meet the specification for ideal job roles.
- Identifying gaps in your knowledge, training, and experience required for your dream role.

- Equipping you with confidence-building skills to develop your business networking, online presence, and career opportunities.

We have an in-house Employability Team who work in-person and online to offer you practical help, with a range of employability services to enable you to be your best and fulfil your career potential.

Careers Coaching; 1 to 1 and group sessions

- Exploring your next steps
- Career planning
- Gaining work experience
- Job Application support
- Interview preparation
- PG study questions
- CV building and review

Employability Awards

Get ready to go places with our Employability Awards; a series of extra-curricular sessions designed to develop your career management skills.

- Bronze: Essentials for your Career Journey (available from foundation and first year)
- Silver: Exploring Career Direction (available from second year)
- Gold: Preparing for Graduate Recruitment (available to final year and PG students)

Industry Exposure

We host employers and key professionals from a range of sectors who speak to students about their career journey, their companies, tips on how to secure a graduate job after university and occasionally they are actively recruiting, so this means you will be able to gain insight from the professionals in your chosen industry.

Online Career Resources

Our online Career Zone is full of great employability resources, including videos, an interview simulator, CV builder and industry reports which you can access anytime throughout your studies.

Enterprise Support

We help entrepreneurs to explore and expand the viability of their business ideas, with an Enterprise Club for existing business owners and a club for aspiring entrepreneurs (Level 5 and above, once you are established in your studies) with networking opportunities and coaching support available,

To contact our employability team, you can send an email to **Employability@london.northampton.ac.uk**



Programmes.

UONL provides a range of Foundation year, Undergraduate and Postgraduate degrees, with an enhanced focus on employability.

At UONL we are extremely passionate about developing and sharing knowledge, this passion is demonstrated in the education we deliver to our students.



To see full information on the programmes UONL provides, please visit: london.northampton.ac.uk/programmes



Foundation year.

For students who wish to undertake a foundation year or do not meet the standard entry requirements for admission to one of our undergraduate programmes, we offer the option of an extended, four-year programme with a foundation year for all programmes.

A foundation year prepares students for the transition to university life and studying at degree level by developing skills necessary for success which include writing, data handling, public speaking, working in teams, and self reflection. During term time, students engage in 12 hours of classroom-based activities and are expected to engage in a significant amount of guided independent study outside of the classroom.

Key learning outcomes

- Demonstrate appropriate academic and professional communication skills.
- Demonstrate core mathematical skills.
- Describe the processes of career planning and development.
- Apply basic research skills and identify reliable academic sources.

Foundation year modules

The Skills for Higher Education foundation module is a 120-credit module made up of the following 15-credit components:

- Research Skills
- Professional Development
- Data Skill
- Communication Skills

Skills and development

- Development of academic skills set
- Improvement of Maths and English skills and knowledge
- Development of personal, professional, and employability skills

Assessment

Varied assessments take place throughout the foundation year and can take the form of a written report, online test, group project and/or presentation.

Quick facts

Campus: London

Duration: four-year extended degree programme

Available starts:
September 2022, January 2023,
May 2023

Business BA (Hons)

This degree will enable students to appreciate the importance of the social, ethical, technological, environmental, and global contexts in which business operates. The programme will also develop the awareness of different ethical and cultural values which operate within many areas of business.

Key learning outcomes

- Appreciating the importance and influence of the social, political, ethical, technological, environmental, legal and global contexts in which businesses operate.
- Evaluating the role of and influence of the law in influencing business organisations.
- Critically appraising the sources, uses and management of finance.
- Understanding a range of contemporary issues such as sustainability, globalisation, corporate social responsibility, diversity, entrepreneurship and more.

Quick Facts

Campus: London

Duration: three-year degree programme or four-year extended degree programme

Available starts: September 2022, January 2023, May 2023

UCAS Tariff Points: 64 foundation / 112 standard entry

Business (Marketing) BA (Hons)

This degree will develop a comprehensive and in-depth understanding of the role and function of marketing within an organisation with specific reference to Marketing Communications, Consumer Behaviour, Business to Business Marketing and International Marketing.

Key learning outcomes

- A clear understanding of the principles and functions within organisations including marketing, managing and developing people, accounting and finance, operational and project management and the use of Information Systems.
- Exploring a variety of organisational types, objectives, operational behaviour and managerial and strategic approaches, both within and between organisations.
- Analyse the range of influences, both internal and external, including the marketplace, on the development of corporate strategy and the organisation's performance.

Quick Facts

Campus: London

Duration: three-year degree programme or four-year extended degree programme

Available starts: September 2022, January 2023, May 2023

UCAS Tariff Points: 64 foundation / 112 standard entry

Business (Human Resource Management) BA (Hons)

The focus of the programme is on human resource management in a modern and dynamic business environment, enabling students to follow a career in human resource management or to choose from a range of alternative career options and professions within business.

Key learning outcomes

- Analyse the role and functioning of human resources within an organisation with specific reference to resourcing the organisation, managing the employment relationship, developing staff and managing human resources in an international context.
- Analysing different approaches necessary for working and communicating effectively, creating successful professional relationships.
- This programme will help students to attain the skills and abilities necessary to succeed in human resource management careers and to develop an awareness and appreciation of different ethical values related to managing people.

Quick Facts

Campus: London

Duration: three-year degree programme or four-year extended degree programme

Available starts: September 2022, January 2023, May 2023

UCAS Tariff Points: 64 foundation / 112 standard entry

Health with Social Care BA (Hons)

This degree is structured to provide you with an extensive look into health and social care work from management, regulation and compliance to how biological, psychological and sociological factors of human development influence the sector.

Key learning outcomes

- Develop a critical awareness of the potential factors that can influence the health and wellbeing of individuals, their communities and populations nationally and globally.
- Analysing healthcare systems; by exploring how health and social care providers and organisations are managed, regulated, integrated and their ability (severally and collectively) to meet the health and social care needs of the populations they serve.
- Analysing the nature of health and social inequalities and evaluating their relationship to a range of contemporary issues identified locally, nationally, internationally and globally.

Quick Facts

Campus: London

Duration: three-year degree programme or four-year extended degree programme

Available starts: September 2022, January 2023, May 2023

UCAS Tariff Points: 64 foundation / 112 standard entry



Mental Health and Wellbeing BSc (Hons)

BSc Mental Health and Wellbeing aims to equip students with the knowledge and skills to identify, understand and respond creatively to the various factors that influence mental health and wellbeing. This will enable students to pursue careers supporting individuals, their communities, organisations, and society to maintain and promote mental health and wellbeing.

Key learning outcomes:

- Examine the key theoretical concepts, policies and legislation underlying mental health and wellbeing, to critically evaluate their application in professional practice.
- Use current and relevant evidence to critically analyse contemporary political, economic, social, technological, legal, cultural and environmental factors and issues affecting mental health and wellbeing on an individual, community and societal level.
- Apply appropriate risk assessment frameworks, to demonstrate a comprehensive, evidence-based understanding of the maintenance and promotion of safe working practices in the field of mental health and wellbeing.

Quick Facts

Campus: London

Duration: three-year degree programme or four-year extended degree programme

Available starts: September 2022, January 2023, May 2023

UCAS Tariff Points: 64 foundation / 112 standard entry

Psychology BA (Hons)

BA (Hons) Psychology offers a rigorous, research-informed programme that equips students with the knowledge and skills to explore and understand why people think, feel and behave as they do, and can be utilised across a wide range of career paths that positively impact in the lives of others.

Key learning outcomes:

- Demonstrate a comprehensive and informed understanding of contemporary issues in psychology to engage convincingly in debates about issues identified on a national and global scale.
- Undertake in-depth exploration of a range of significant life events and the factors that impact on development through the life course such as, socio-cultural factors, the environment, socialisation, ageing, childhood, attachment, language development and biopsychosocial approaches.

Quick Facts

Campus: London

Duration: three-year degree programme or four-year extended degree programme

Available starts: September 2022, January 2023, May 2023

UCAS Tariff Points: 64 foundation / 112 standard entry

Law LLB

A law degree opens doors to many different opportunities. From becoming a successful lawyer, a degree in law would enable individuals to gain valuable skills and knowledge that can be applied to a range of industries.

Key learning outcomes:

- Demonstrate critical awareness of the principles and values of law, justice and ethics.
- Analyse complex, real or hypothetical legal problems and produce reasoned conclusions.
- Critically evaluate and analyse relevant doctrinal and policy issues to present a reasoned choice between alternative solutions and critical judgement of the merits of arguments.

Quick Facts

Campus: London

Duration: three-year degree programme or four-year extended degree programme

Available starts: September 2022, January 2023, May 2023

UCAS Tariff Points: 64 foundation / 112 standard entry

MBA International Master of Business Administration

MBA International is a generalist career development programme that combines theoretical study with practical application. It offers an intellectually stimulating experience through which subject knowledge is extended alongside the development of the personal and professional skills needed to undertake strategic leadership roles in a range of organisations. It is a programme that is designed to develop tomorrow's business leaders and change creators.

Key learning outcomes:

- Select and apply theoretical and empirical frameworks to critically evaluate the complex and dynamic international environment in which organisations operate.
- Evaluate the impact of cultural difference, the challenges and opportunities of cross-cultural working and the impact of globalisation on organisations.
- Demonstrate comprehensive understanding of ethical and responsible strategic leadership and its role in facilitating positive organisational change.

Quick Facts

Campus: London

Duration: one-year programme or part-time two-years degree programme

Entry requirement: Second Class Honours degree or higher (or equivalent)



Entry Requirements.

Our published entry requirements are a guide only and our decision will be based on our assessment of your overall suitability for the programme. We treat everyone as an individual, which means we will look at your whole application, including any relevant work experience and personal circumstances, as well as your educational qualifications.

Standard Degree Entry Requirements

Between 64 – 112 UCAS Tariff Points.

UONL also accepts many international qualifications, for a full list please visit our website london.northampton.ac.uk/admissions/entry-requirements-for-eu-and-international-qualifications

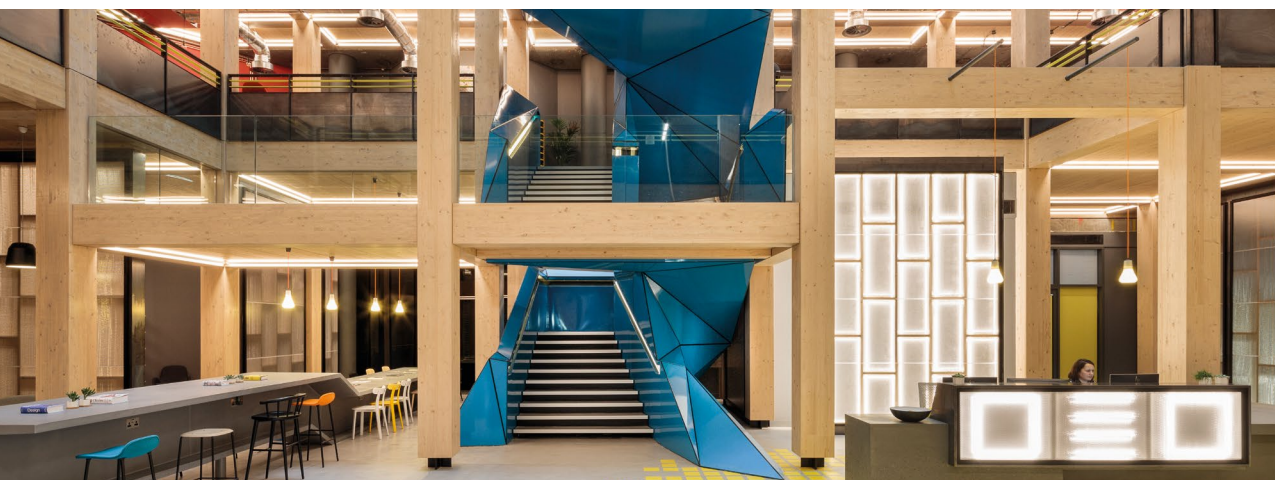
England Language Requirements

Students whose first language is not English and who have not previously studied in the UK are required to have IELTS 6.0 with a minimum of 5.5 for each sub-test or equivalent or complete a 'Password' English Language Test.

To submit an application to UONL you can apply directly through our online **admissions portal**. On your application, you will need to upload all required documents and complete all mandatory steps.

Once your application has been submitted our admissions team will respond within three working days. We encourage our applicants to apply as soon as possible.

If you have any questions or require any help in submitting an application please email us at admissions@london.northampton.ac.uk



Student Finance, Fees and Scholarships.



Tuition Loans

Tuition Fee Loans are obtained from Student Finance England and are used to pay the cost of your tuition fees.

You apply for a Tuition Fee Loan through Student Finance England; please refer to the website gov.uk/student-finance to check deadlines and eligibility.



Maintenance Loans

Students eligible for the Undergraduate Loan **can be awarded a loan of up to £12,382** to help with living expenses – the amount you can borrow will depend on your family's finances.



Our Fees

UK Full-time fee: **£9,250 per annum.**

For more information on scholarships at UONL please visit our website london.northampton.ac.uk/admissions/scholarships-and-support



**A partner of the
University of
Northampton**


 **@UONL**

 **@UONLondon**

 **@UONLondon**

 **universityofnorthamptonlondon**

 **london.northampton.ac.uk**

 **020 3861 6700**

UONL is a proud partner of the University of Northampton (UON). Working to high academic and professional standards, we are approved to deliver a wide range of UON programmes.